

galerie rtLetter

No. 2

Sept 2004

Editorial

Welcome

to the 2nd edition of the ArtLetter. A lot has been going on since the last one. New paintings have been completed, exhibitions premiered and exciting projects were born. But please see for yourself all the new stuff www.galerie-a.com has to offer.

Short Cuts

Exhibition

DaimlerChrysler Services, Berlin, Am Potsdamer Platz. Please check with the front desk in order to visit the exhibition.

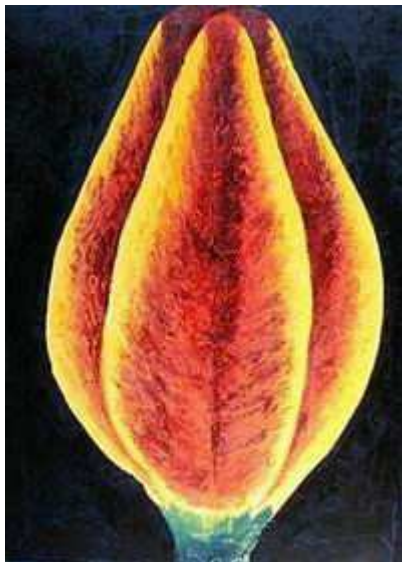
Vernissage: Jun 17, 2004

Exhibition: Jun 18 - Oct 2, 2004

The Artist



The Idea behind the Painting



Die Gelbe Tulpe

One of my first pieces, actually the 3rd - and strictly not for sale. It just came by accident and should have become a companion piece to **Primavera**. But the colors and brushes went on strike and this is the reason why a flower came out of it – a powerful and striking flower. Die Gelbe Tulpe – a one-of. Only measuring 60x80 cm, oil on canvas, but nevertheless a painting which has a dynamic all its own. Due to the **Special Event** at the DesignStudio Venek the team around B. Venek took up the challenge to digitally re-work the piece in order to create something special as well: Die Gelbe Tulpe



Friends of galerieA

DesignStudio B. Venek is equipped with state-of-the-art technology, including a wide range of photographic and typographical processing software. They are experienced in handling a large number of formats and place an emphasis on fast project turnaround.



Business

- PowerPoint desktop and large scale presentations (trade fairs, workshops, events)
- Posters / equipment for trade fairs
- Promotion material and business related graphics
Product design
- Fonts, logos, signature prints
- Film, photo, video conversion